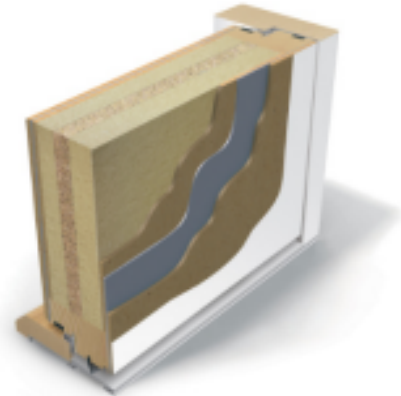




## FIRE- AND SOUND RESISTANT EXTERNAL DOOR ED178-T1-30

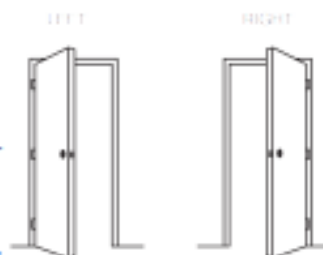
Outward opening fire resistant external door with 1-sealing.

Fire resistance	EI-30
Sound insulation	Rw35-36dB
Water tightness	7B
Air permeability	Class 4
Thermal transmittance	0,85 W/m²K without glass 1,31-0,95 W/m²K with glass



### TECHNICAL DATA

Size	M9-10 x M20-21
Door leaf	thickness 78mm
Frame	pine, depth 105mm
Threshold	oak-aluminium, height 25mm
Locking system	lock case ASSA 410 or 310, striking plate 1487-2
Hinges	plate hinges Abloy 110-36KSS
Finishing	white (S 0502-Y), special colour or teak veneer
Extras	locks from different manufacturers, stainless steel click plate, door closer, door eye, grooved pattern, glued decorative panels and/or moldings



It is possible to get special solutions. More information from the representative.



# FIRE- AND SOUND RESISTANT EXTERNAL DOOR ED178-T1-30

	H	B	W	A	A1	A2
M9			890	825	802	724
M10			990	925	902	824
M20	1989	1940				
M21	2089	2040				

EC03

